

榎山
NARAYAMA

MARIE JULIA BOLLANSÉE 2020

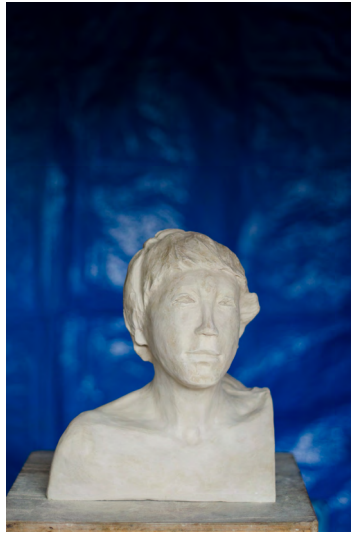
installation, with 21 sculptures, 21 blue tarpaulins, video on 27'PVM, sound
B 3500 x D 4000 x H 550, flexible + adaptable to the given space

all sculptures are unique pieces, modelled in white clay, fired on 1050°
artist's signature inside, engraved in the clay



1938

H 300, L 310, D 190



1941

H 300, L 245, D 215



1943

H 430, L 210, D 230



1951

H 300, L 200, D 270



1955

H 415, L 200, D 220



1959

H 380, L 300, D 230

www.mariejuliabollansee.be

GALERIE VRIJDAG, Emiel Banningstraat 38, 2000 Antwerpen (zuid)

tel: +32 3 248 74 95, www.galerievrijdag.be



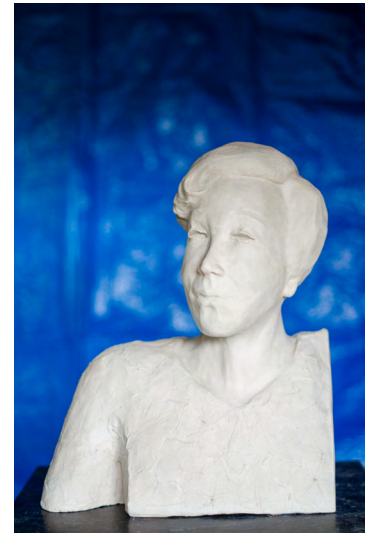
1960

H 410, L 370, D 220



1965

H 420, L 390, D 230



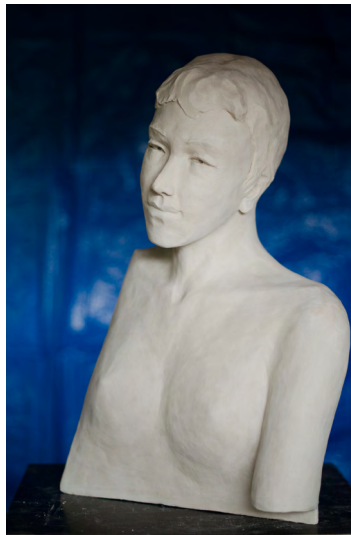
1972

H 420, L 340, D 180



1981

H 440, L 200, D 200



1987

H 540, L 335, D 230



1991

H 500, L 360, D 230



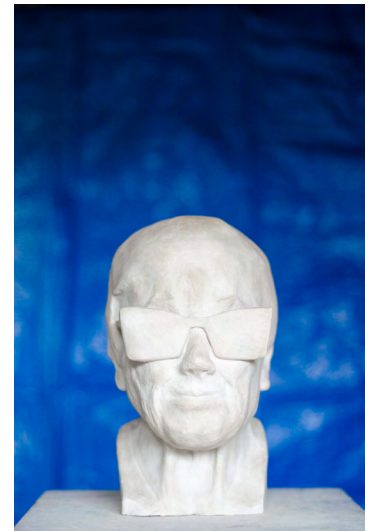
1993

H 515, L 350, D 250



1999

H 450, L 210, D 210



2001

H 290, L 170, D 190

www.mariejuliabollansee.be

GALERIE VRIJDAG, Emiel Banningstraat 38, 2000 Antwerpen (zuid)

tel: +32 3 248 74 95, www.galerievrijdag.be



2002

H 290, L 200, D 250



2007

H 335, L 270, D 250



2012

H 510, L 165, D 200



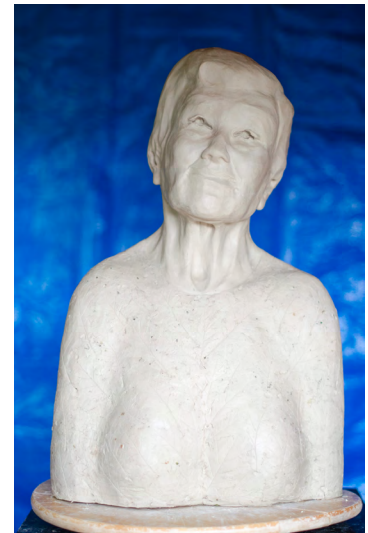
2018

H 380, L 270, D 250



2019

H 330, L 190, D 350



2020

H 520, L 340, D 250



榎山 NARAYAMA

video, 11'18", ratio 560 x 720, op 27' PVM

Marie Julia Bollansée, concept, camera, edit
KOGA Rieko, FUJII Sayuri, voices
FUKAZAWA Shichirô, text, The Ballad of Narayama

www.mariejuliabollansee.be

GALERIE VRIJDAG, Emiel Banningstraat 38, 2000 Antwerpen (zuid)

tel: +32 3 248 74 95, www.galerievrijdag.be